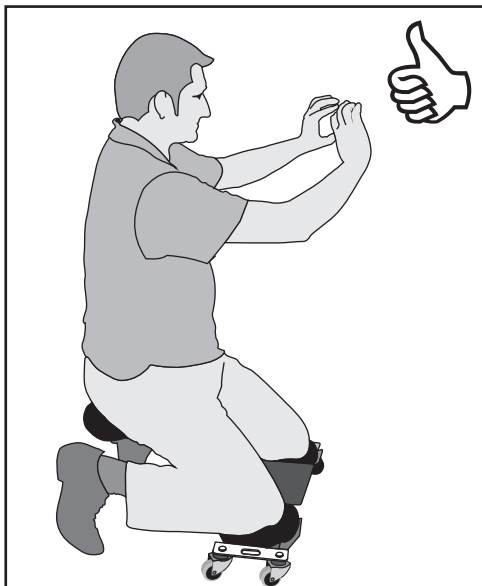
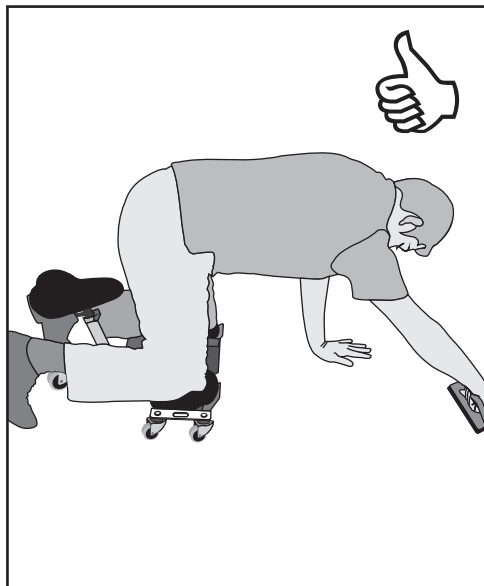
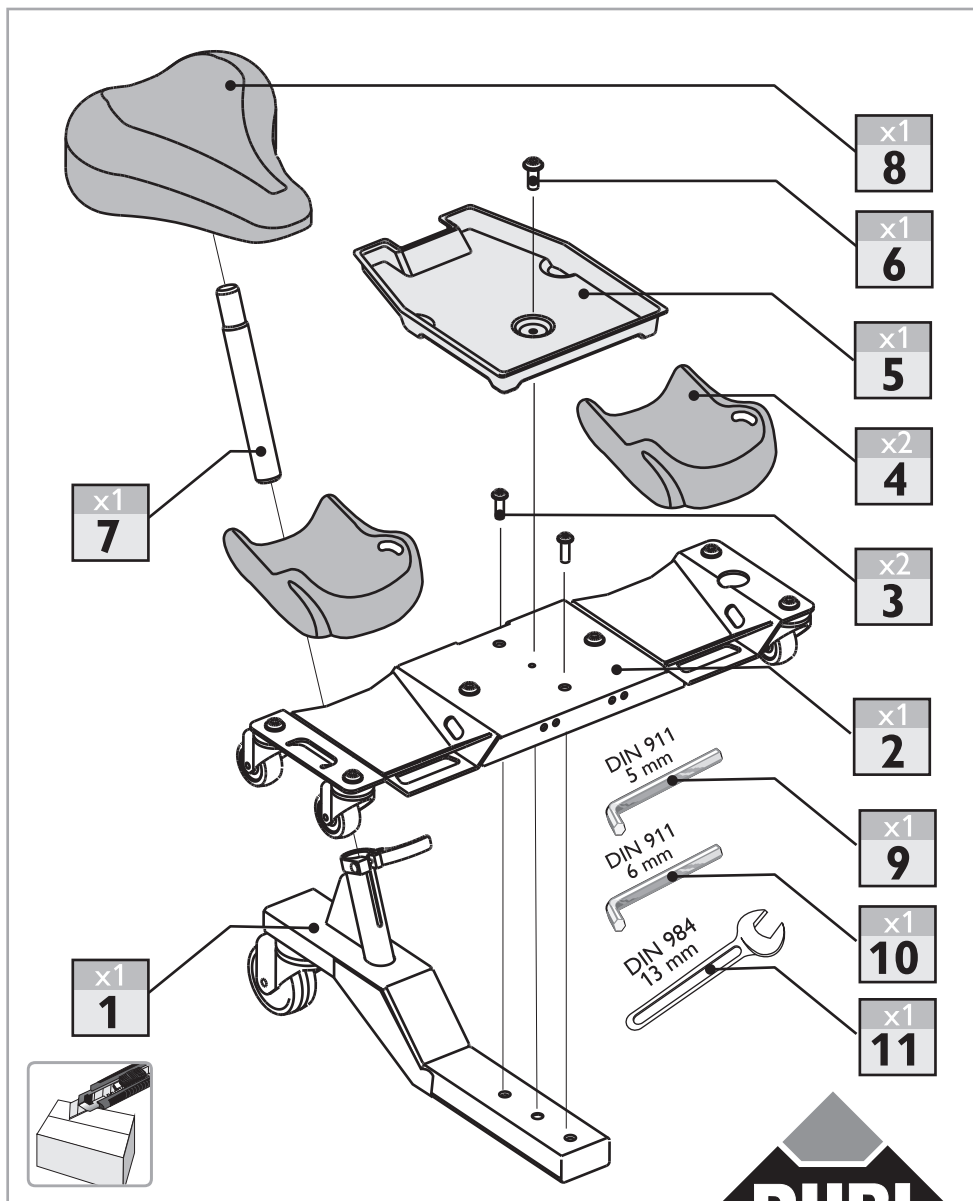


ATENCIÓN ATTENTION

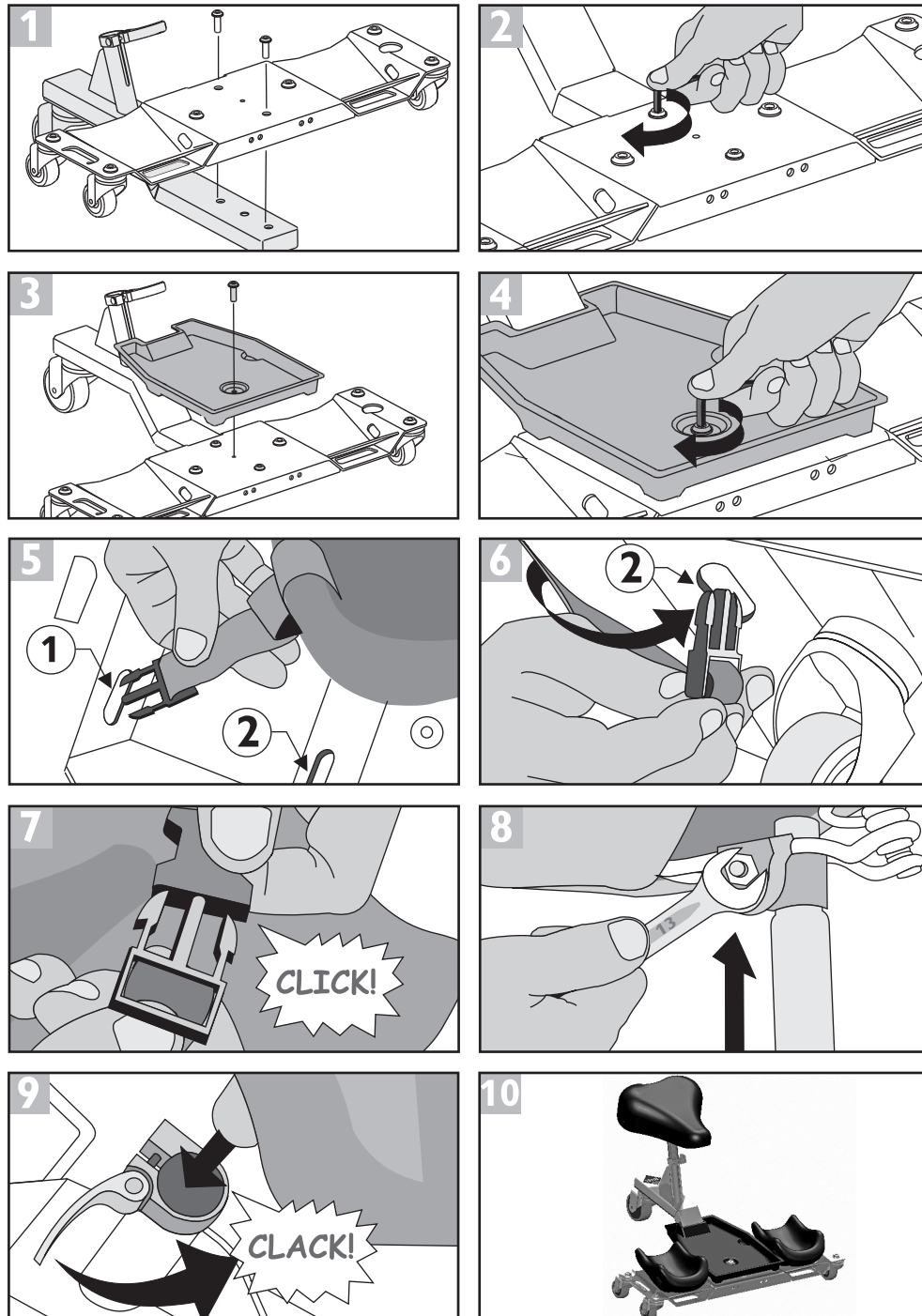


Ref.81033 V2

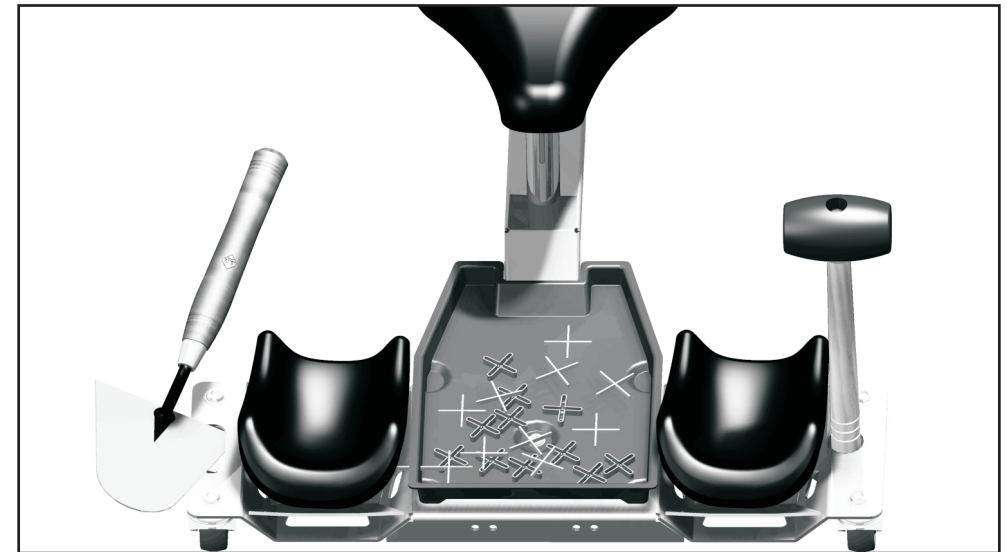
INSTRUCCIONES DE MONTAJE ASSEMBLY INSTRUCTIONS



SR-1



SR-1



CARACTERÍSTICAS TÉCNICAS TECHNICAL CHARACTERISTICS

Ref.			 Máx.	 Kg.
Ref.81999	600x500x400 mm 23 5/8x19 11/16x15 3/4 inch	Ref.65915	130 Kg • 286 Lb	4,8 Kg • 10,5 Lb

